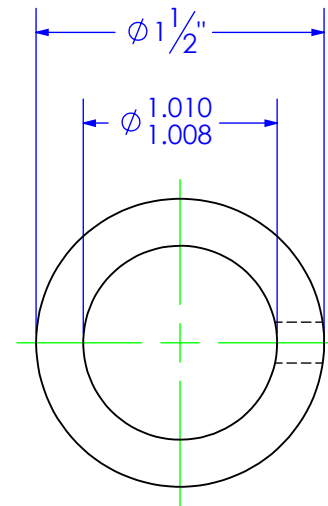
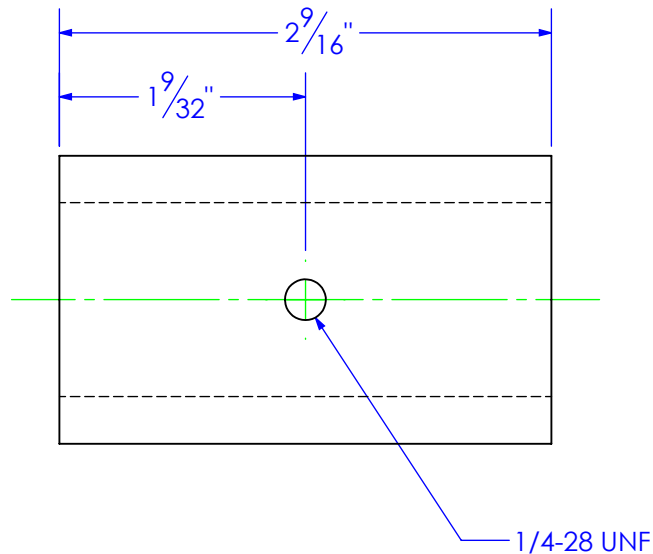


PART NUMBER	DESCRIPTION	MATERIAL
FP-HF8-MMPB	BUSHING, PIVOT, MOTOR MOUNT	MT 1.5x1.00


REVISIONS			
REV.	DESCRIPTION	DATE	APPROVED
A	INITIAL RELEASE	12/13/2019	
B	REVISE BORE DIAMETER	3/4/2020	



NOTE:  
BREAK ALL SHARP EDGES.

**PROPRIETARY AND CONFIDENTIAL**  
THE INFORMATION CONTAINED IN THIS  
DRAWING IS THE SOLE PROPERTY OF TRIPLE  
C INC. ANY REPRODUCTION IN PART OR  
AS A WHOLE WITHOUT THE WRITTEN  
PERMISSION OF TRIPLE C, INC IS PROHIBITED.

UNLESS OTHERWISE SPECIFIED:  
DIMENSIONS ARE IN INCHES  
TOLERANCES:  
FRACTIONAL  $\pm 1/16$   
ANGULAR: MACH  $\pm 1$  BEND  $\pm$   
TWO PLACE DECIMAL  $\pm .010$   
THREE PLACE DECIMAL  $\pm .005$   
MATERIAL MT 1.5x1.00  
DO NOT SCALE DRAWING

	NAME	DATE	P.O. BOX 248, SABETHA, KS 66534 (785) 284-3674 FAX (785) 284-3931		
D: DRAWN	ETHAN	3/4/2020	 <b>DALE LIFT</b> <b>HYDRABED</b>		
PART #	FP-HF8-MMPB				
ASM #	Asm #				
COMMENTS:					
BUSHING, PIVOT, MOTOR MOUNT			SIZE	DWG. NO.	REV
			A	95-2234	B
			SCALE: 1:1	WEIGHT: 0.70	SHEET 1 OF 1